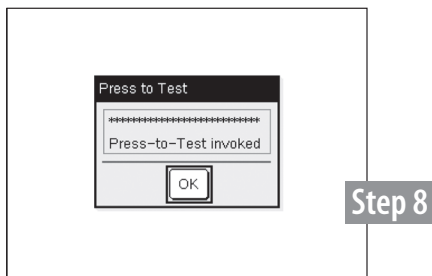
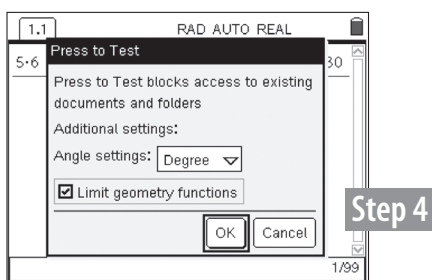




TI-Nspire & TI-Nspire CAS



## Press-to-Test


### SET-UP INSTRUCTIONS

1. Begin with the handheld powered **OFF**.
2. Hold down the **ESC**, **HOME** and **ON** keys – all three simultaneously.
3. The **PRESS-TO-TEST** mode dialog box will appear on screen. Release the keys.
4. Use the **TAB** key to select options: Change default angle settings and/or limit geometry functions by using the arrow and enter keys.
5. Once your selections have been made, highlight the **OK** button and press **ENTER**.
6. The handheld will now reboot on its own, showing a status bar on screen.
7. **TI-Nspire handheld only:** The **LED\*** at the top of the unit flashes during this process.
  - a. RED, GREEN and YELLOW when rebooting.
  - b. GREEN when “Limit geometry functions” is checked in the dialog box.
  - c. YELLOW when “Limit geometry functions” is **not** checked.

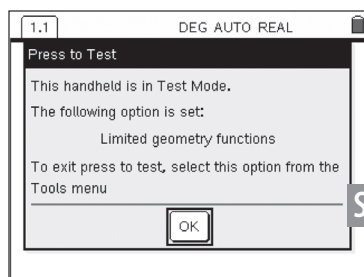
\*The LED is **not** available on the TI-Nspire CAS handheld. The LED does **not** operate with the TI-84 Plus Keypad installed into the TI-Nspire handheld.

**All other Press-to-Test functionality is the same.**

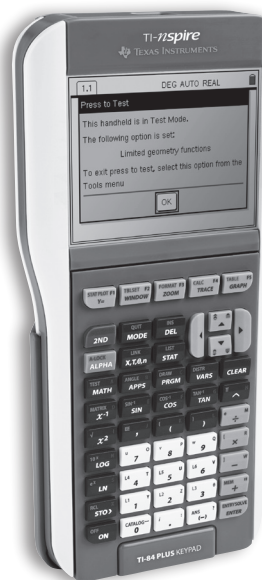
8. After rebooting, a “Press-to-Test invoked” dialog box will appear on screen.

 = illustration shown.

**RESTORE INSTRUCTIONS ON REVERSE SIDE.**



Step 2b




## Restore Instructions for TI-Nspire handheld

1. Using a USB unit-to-unit cable, connect the TI-Nspire handheld that is in Press-to-Test mode to another TI-Nspire handheld.
2. For a handheld-to-handheld connection, both units must be powered **ON**.
  - a. Begin with the TI-Nspire handheld in Press-to-test mode
  - b. Select **EXIT PRESS-TO-TEST** under the **TOOLS** menu.  
After selecting Exit both devices will reboot and exit Press-to-test
  - c. Documents created during testing mode will be deleted and previous working documents will be restored.

## Restore Instructions for TI-Nspire Handheld with TI-84 Plus Keypad Installed

1. Using a USB unit-to-unit cable, connect the TI-Nspire handheld that is in Press-to-Test mode to a computer, TI-Nspire handheld or TI-84 Plus graphing calculator.
2. **SEND** or **RECEIVE** any file between the linked handheld, or graphing calculator.

 = illustration shown.